



NOW LEASING **Professional Office Space**

Available- 600 Sq. ft. to
40,000 Sq. Ft.

Move in ready suites

Free rent for new tenants

Call: 214-207-7173



1250

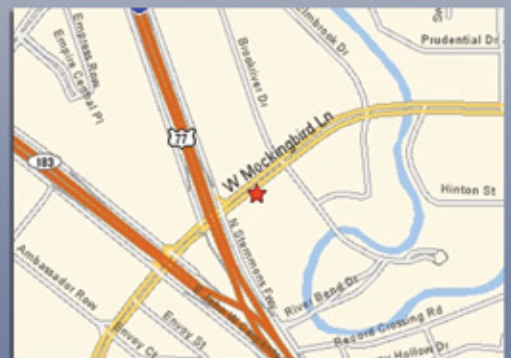
1250 W. MOCKINGBIRD LANE

The Comerica Bank building is 120,000 Sq. Ft. class "B" multi-tenant professional office building located at the gateway to the Dallas Medical District and Love Field airport. 1250 W. Mockingbird Lane is an excellent office environment for Tenants who seek a central location, secure, affordable, aesthetically pleasing yet functional office space.

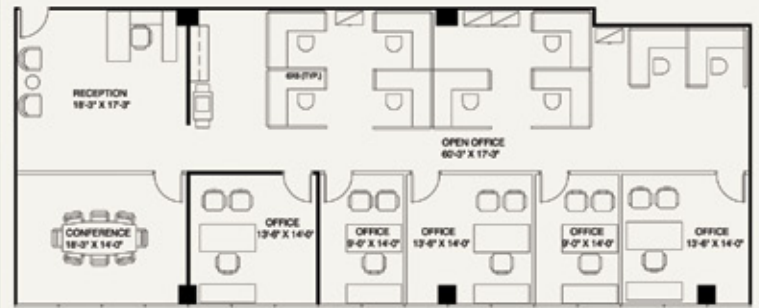


Building Amenities;

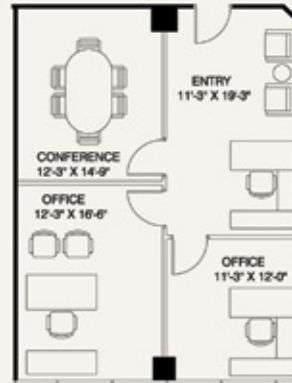
- Murphy's Deli & Sundry Shop
- Full service travel agency
- Commercial & retail banking
- Manned security, state of the art video surveillance
- On site management office
- Covered parking



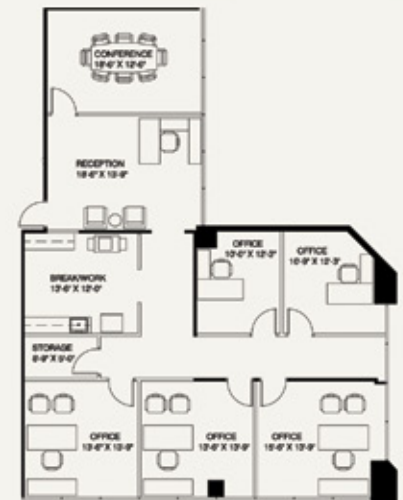
1250 W. MOCKINGBIRD LANE



SUITE 540 / 3,009 Sq. Ft.



SUITE 327B / 980 Sq. Ft.



SUITE 560 / 2,286 Sq. Ft.



- Up to 7 parking spaces per 1,000 Sq. Ft. leased
- True full service leases
- Lobby upgrades in 2013
- Flexible & efficient floor plans



Justin Smith
TXRE Properties, LLC
P.O. Box 631191
Irving, TX 75063

Main Office: 214-630-2653
Mobile: 214-207-7173
Fax: 214-260-0788
jsmith@txreproperties.com
www.txreproperties.com